



Plaza Collection

With classic stability and durability, Plaza City outdoor metal bench is fabricated with vertical steel straps and includes either a backed or backless option. Plaza Town outdoor bench seat is fabricated with vertical steel straps and circular, cast iron end frame arms; available with back or backless. Plaza Village benches are fabricated with vertical steel straps, and angled

end frame arms; available with back or backless. This colorful outdoor bench collection also features complementary trash receptacles and picnic tables.

Plaza City

- Strong 1/4 x 1-1/2" steel strap seats, fully welded 1" solid bar or cast iron end frame 48" - 96 L
- With Back or Backless
- Comfortable Contour Back
- Matching Tables & Receptacles
- Durable Slat Construction



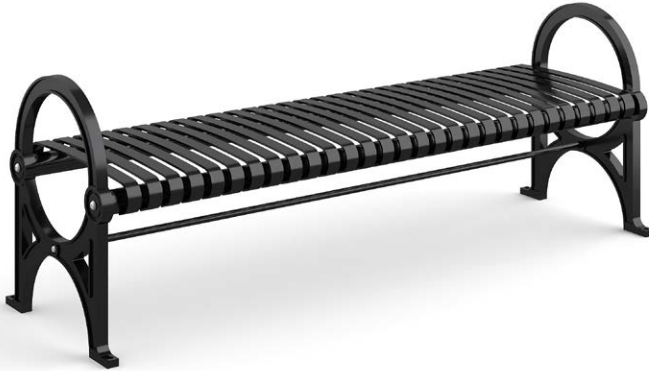
PRODUCT	DESCRIPTION	LENGTH	WIDTH	HEIGHT	SEAT HEIGHT	WEIGHT LBS.	MOUNTING
PZ-0200-48	Plaza City Steel Bench w/ Back (PL-2)	47"	26"	35-5/8"	16-3/4"	208	Surface-mount
PZ-0220-48	Plaza City Steel Bench w/ Back	47"	26"	35-5/8"	16-3/4"	208	Embed
PZ-0200-60	Plaza City Steel Bench w/ Back	59"	26"	35-5/8"	16-3/4"	241	Surface-mount
PZ-0220-60	Plaza City Steel Bench w/ Back	59"	26"	35-5/8"	16-3/4"	241	Embed
PZ-0200-72	Plaza City Steel Bench w/ Back	71-1/4"	26"	35-5/8"	16-3/4"	274	Surface-mount
PZ-0220-72	Plaza City Steel Bench w/ Back	71-1/4"	26"	35-5/8"	16-3/4"	274	Embed
PZ-0200-96	Plaza City Steel Bench w/ Back	95-1/4"	26"	35-5/8"	16-3/4"	340	Surface-mount
PZ-0220-96	Plaza City Steel Bench w/ Back	95-1/4"	26"	35-5/8"	16-3/4"	340	Embed
PZ-0400-48	Plaza City Steel Backless Bench (PL-1)	47"	18-1/2"	16-1/2"	16-1/2"	160	Surface-mount
PZ-0420-48	Plaza City Steel Backless Bench	47"	18-1/2"	16-1/2"	16-1/2"	160	Embed
PZ-0400-60	Plaza City Steel Backless Bench	59"	18-1/2"	16-1/2"	16-1/2"	190	Surface-mount
PZ-0420-60	Plaza City Steel Backless Bench	59"	18-1/2"	16-1/2"	16-1/2"	190	Embed
PZ-0400-72	Plaza City Steel Backless Bench	71-1/4"	18-1/2"	16-1/2"	16-1/2"	223	Surface-mount
PZ-0420-72	Plaza City Steel Backless Bench	71-1/4"	18-1/2"	16-1/2"	16-1/2"	223	Embed
PZ-0400-96	Plaza City Steel Backless Bench	95-1/4"	18-1/2"	16-1/2"	16-1/2"	278	Surface-mount
PZ-0420-96	Plaza City Steel Backless Bench	95-1/4"	18-1/2"	16-1/2"	16-1/2"	278	Embed

*Plaza Collection benches are available in 48", 60", 72", and 96" lengths. Plaza City benches are shown with standard surface-mount bases, also available with permanent embed mounting.



Plaza Town

- Strong 1/4 x 1-1/2" steel strap seats, fully welded 1" solid bar or cast iron end frame
- With Back or Backless
- Comfortable Contour Back
- Matching Tables & Receptacles
- Durable Slat Construction
- Available with Cast Ends

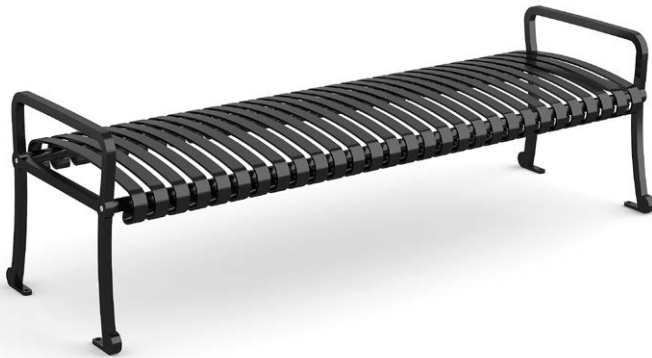


PRODUCT	DESCRIPTION	LENGTH	WIDTH	HEIGHT	SEAT HEIGHT	WEIGHT LBS.	MOUNTING
PZ-01C00-48	Plaza Town Steel & Cast Iron Bench w/ Back & Arms (PL-5)	49-1/4"	27-1/4"	33-1/2"	16-1/2"	283	Surface-mount
PZ-01C00-60	Plaza Town Steel & Cast Iron Bench w/ Back & Arms	61-1/4"	27-1/4"	33-1/2"	16-1/2"	323	Surface-mount
PZ-01C00-72	Plaza Town Steel & Cast Iron Bench w/ Back & Arms	73-1/4"	27-1/4"	33-1/2"	16-1/2"	364	Surface-mount
PZ-01C00-96	Plaza Town Steel & Cast Iron Bench w/ Back & Arms	97-1/4"	27-1/4"	33-1/2"	16-1/2"	449	Surface-mount
PZ-03C00-48	Plaza Town Steel and Cast Iron Backless Bench w/Arms (PL-1.5)	49-1/4"	22"	26"	17"	230	Surface-mount
PZ-03C00-60	Plaza Town Steel and Cast Iron Backless Bench w/Arms	61-1/4"	22"	26"	17"	252	Surface-mount
PZ-03C00-72	Plaza Town Steel and Cast Iron Backless Bench w/Arms	73-1/4"	22"	26"	17"	275	Surface-mount
PZ-03C00-96	Plaza Town Steel and Cast Iron Backless Bench w/Arms	97-1/4"	22"	26"	17"	321	Surface-mount

*Plaza Collection benches are available in 48", 60", 72", and 96" lengths.

Plaza Village

- Strong 1/4 x 1-1/2" steel strap seats, fully welded 1" solid bar or cast iron end frame
- With Back or Backless
- Comfortable Contour Back
- Matching Tables & Receptacles
- Durable Slat Construction



PRODUCT	DESCRIPTION	LENGTH	WIDTH	HEIGHT	SEAT HEIGHT	WEIGHT LBS.	MOUNTING
PZ-0100-48	Plaza Village Steel Bench w/ Back & Arms (PL-3)	48-3/4"	26-7/8"	33-5/8"	16"	160	Surface-mount
PZ-0100-60	Plaza Village Steel Bench w/ Back & Arms	60-3/4"	26-7/8"	33-5/8"	16"	190	Surface-mount
PZ-0100-72	Plaza Village Steel Bench w/ Back & Arms	72-3/4"	26-7/8"	33-5/8"	16"	223	Surface-mount
PZ-0100-96	Plaza Village Steel Bench w/ Back & Arms	96-3/4"	26-7/8"	33-5/8"	16"	278	Surface-mount
PZ-0300-48	Plaza Village Steel Backless Bench with Arms (PL-1.3)	48-3/4"	23-1/2"	21"	16-1/2"	169	Surface-mount
PZ-0300-60	Plaza Village Steel Backless Bench with Arms	60-3/4"	23-1/2"	21"	16-1/2"	195	Surface-mount
PZ-0300-72	Plaza Village Steel Backless Bench with Arms	72-3/4"	23-1/2"	21"	16-1/2"	216	Surface-mount
PZ-0300-96	Plaza Village Steel Backless Bench with Arms	96-3/4"	23-1/2"	21"	16-1/2"	298	Surface-mount

*Plaza Collection benches are available in 48", 60", 72", and 96" lengths.

